



Quick Start Guide

PM84P

v0.1, August 2025

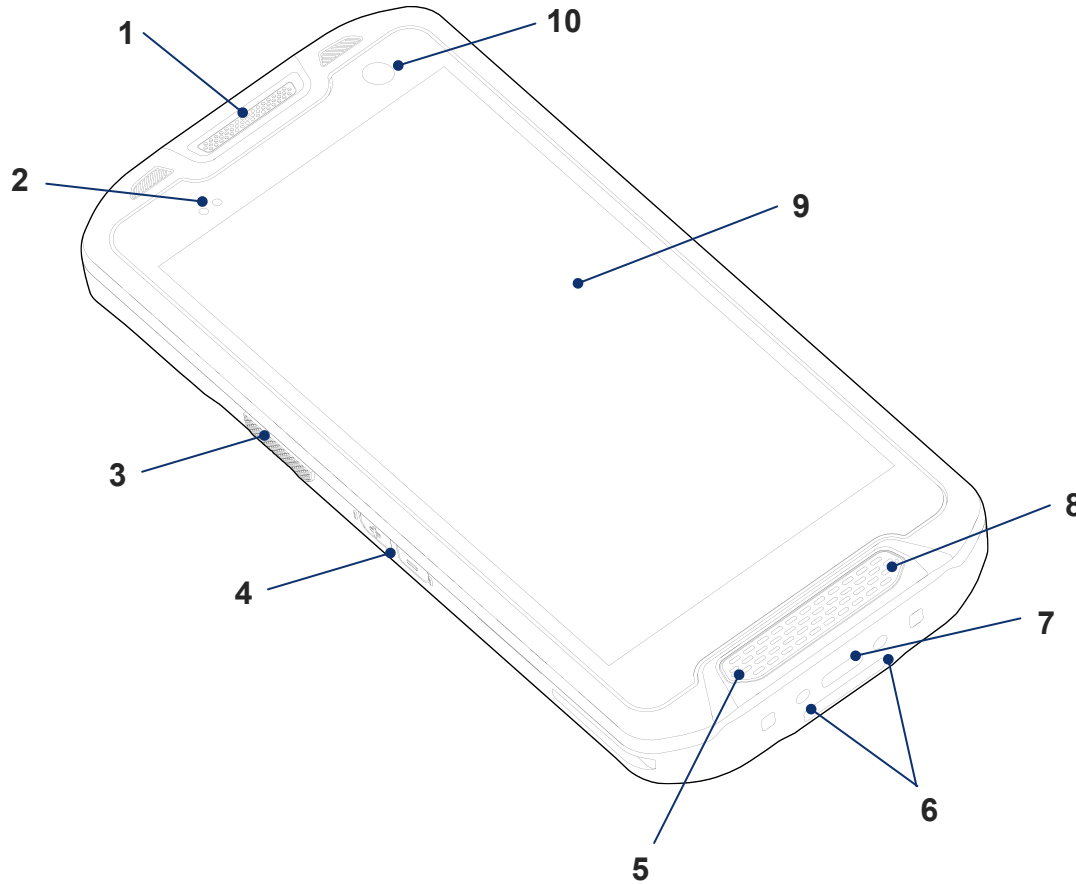
Copyright © 2025 POINT MOBILE Co., Ltd. All rights reserved.

Point Mobile Co., Ltd. is the designer and manufacturer of mobile handheld devices. The POINT MOBILE logo is a registered trademark and symbol of POINT MOBILE Co., Ltd.

Features and specifications are subject to change without prior notice.

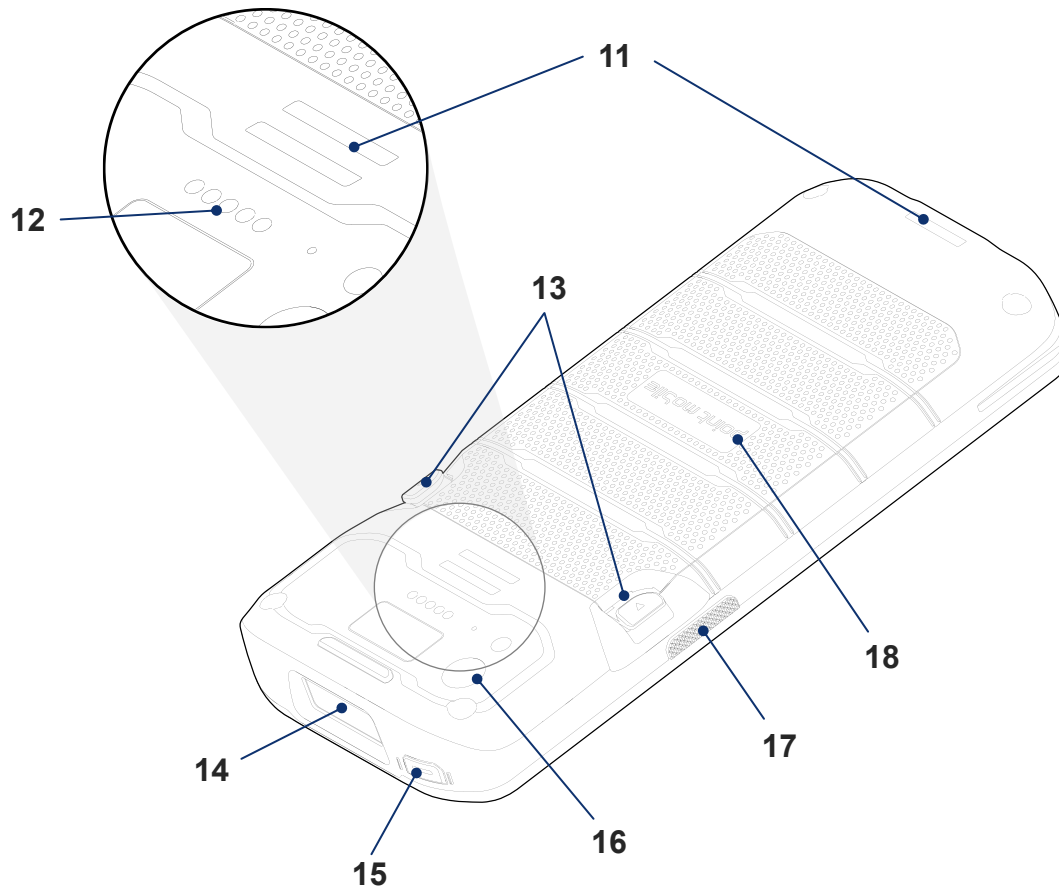


Device Parts



1. Receiver
2. LED indicator
3. Scan button (Left)
4. Volume buttons
5. Microphone
6. I/O connector for cradle
7. USB connector
8. Speaker
9. Touch Screen
10. Front camera

Device Parts



11. Hand strap hole (Top / Bottom)
12. Rear I/O connector
13. Battery release buttons
14. Scanner
15. Power button
16. Rear camera & Flashlight
17. Scan button (Right)
18. Battery

Product Standard Accessories



Battery Pack



Charger



AC plug



LCD protection film



Hand strap

Battery Replacement

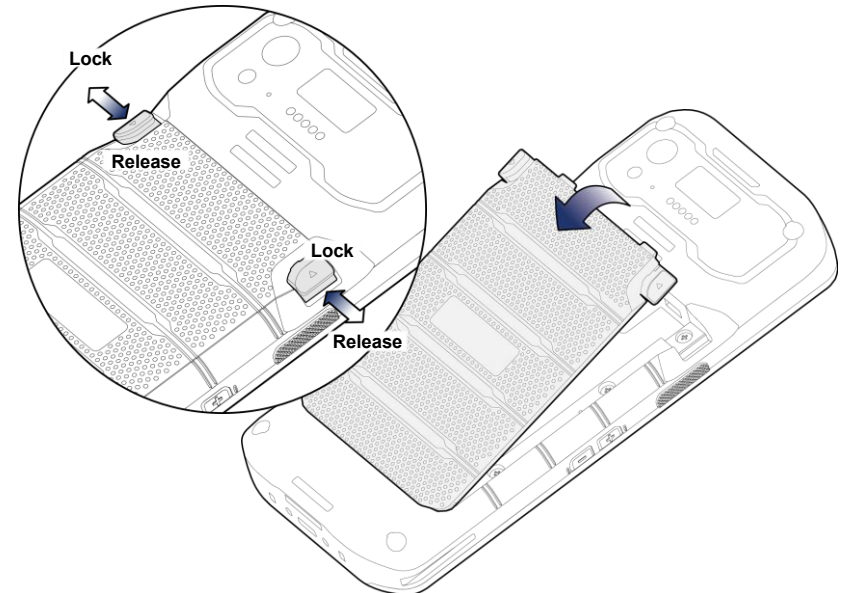
Install Battery

1. Insert the battery from the bottom side first.
2. Push the battery down until it clicks.

Confirm that the battery release buttons are completely outward and the bottom side is fully engaged.

Remove Battery

1. Hold the battery release buttons and press in
2. While pressing the battery release buttons in, pull the battery up.



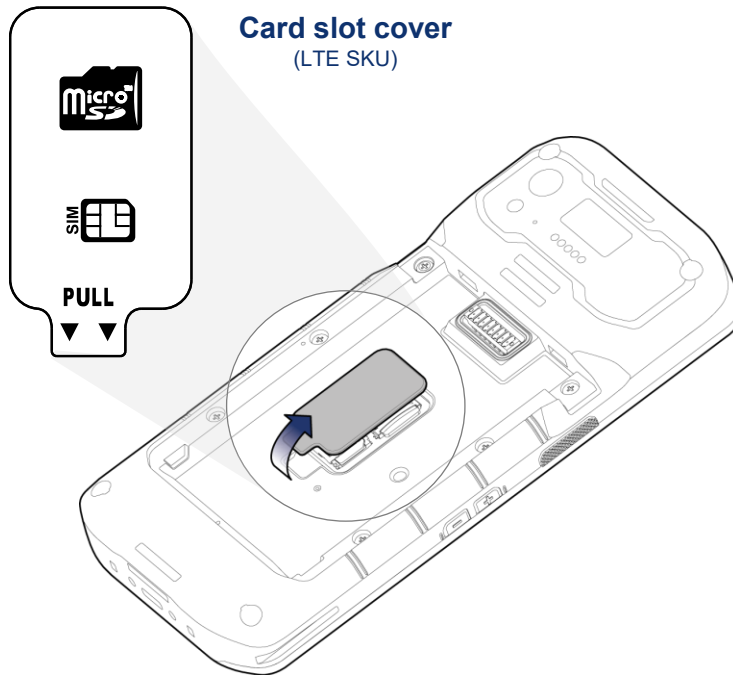
SD / SIM Card Slot Cover

PM84P provides

- 1 microSD card slot
- 1 Nano SIM card slot – LTE SKU only

Remove the battery and open the SD / SIM card slot cover to find the slots..

You can use the handle on the bottom side of the cover to open.

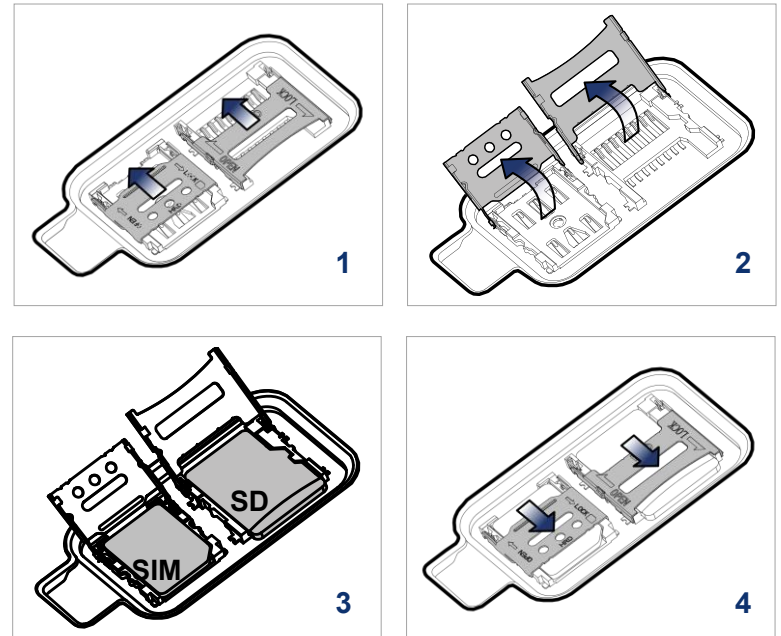


< Notice >

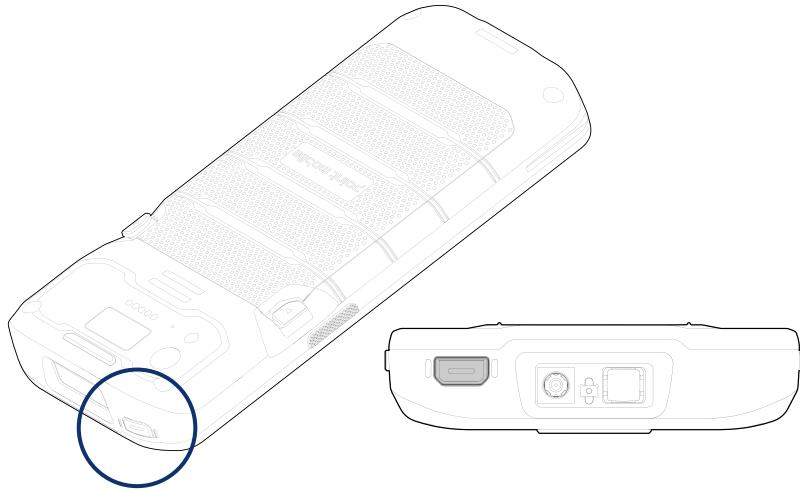
Do not throw away the cover. It affects device sealing performance against water, dust, etc.

SD / SIM Card Installation

1. Gently slide the SD cardholder left and swing upwards to open the holder.
2. Put the SD card you prepared with the contacts facing down, close the holder down, and gently slide it right to lock the holder



Turning on / off



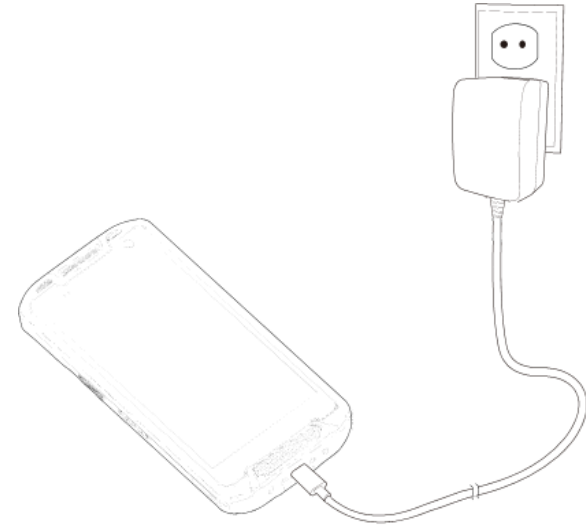
Turn on

Press and hold the power button on the top of the device until **SMART BEYOND RUGGED** logo displays on the screen.

Turn off

Press and hold the power button when the display is on until the power menu is shown. Then, tap **Power off**.

Charging the Terminal



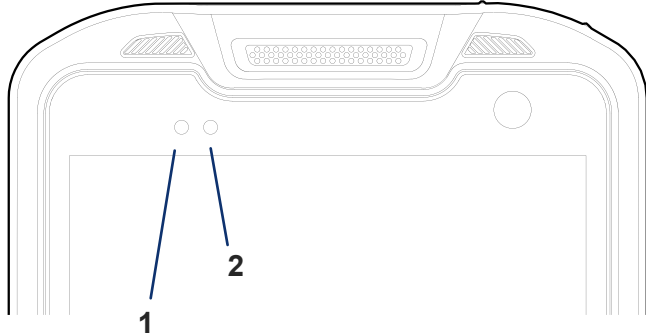
1. Assemble the country plug, power adapter.
2. Connect the cable to the USB connector on the bottom side of PM84P.
3. Provide power by plugging the power adapter to the wall socket.

PM84P can also be charged with charging cradle (sold separately).

< Caution >

1. *Always use an original power supply from Point Mobile. Other chargers and cables may damage the P8. The terminal warranty does not cover any damage caused by the usage of non-original power supplies.*
2. *Make sure the charger and cable is not wet.*
3. *Charge in temperatures from 0°C to 40°C.*


LED Indicator

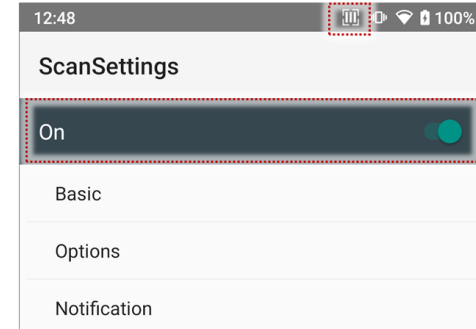


No	Indicator	Status	Indication
1	Power LED	Solid green	Device is completely charged
		Solid red	Device is charging / Battery is low
		Blinking red	Charging temperature is out of normal range / Battery is very low
		Alternately blinking red & green	Cannot recognize the battery
2	Notification LED	Blinking blue	Notification existing
		Red flash	Barcode reading failed
		Blue flash	Barcode reading success

Scanning Barcode

Scanner is disabled by default. Enable the scanner from **ScanSettings** before use.

Check if the scanner icon  is placed on the Status bar. Then, press the scan button on the device to scan a barcode.



Cross-hair Aimer SKU

Center the cross-hair laser aimer over the barcode.



Specifications

Rated voltage	Adaptor: 5V / 2A Battery Rated voltage: 3.87V
Operating Temperature	-20°C to 60°C / -4°F to 140°F
WLAN	802.11 a/b/g/n/ac/ax + operating frequencies 802.11 b/g/n/ax 20MHz: 2 412 MHz ~ 2 472 MHz (TRX) 802.11 a/n/ac/ax 20MHz: 5 180 MHz ~ 5 320 MHz (TRX) 802.11 n/ac/ax 40MHz: 5 190 MHz ~ 5 310 MHz (TRX) 802.11 ac/ax 80MHz: 5 210 MHz ~ 5 290 MHz (TRX) 802.11 a/n/ac/ax 20MHz: 5 500 MHz ~ 5 825 MHz (TRX) 802.11 n/ac/ax 40MHz: 5 510 MHz ~ 5 795 MHz (TRX) 802.11 ac/ax 80MHz: 5 530 MHz ~ 5 775 MHz (TRX) 802.11 ax 20MHz: 5 955 MHz ~ 7 115 MHz (TRX) 802.11 ax 40MHz: 5 965 MHz ~ 7 085 MHz (TRX) 802.11 ax 80MHz: 5 985 MHz ~ 7 025 MHz (TRX)
LTE	LTE – B1 : 1 920 MHz ~ 1 980 MHz (TX) / 2 110 MHz ~ 2 170 MHz (RX) LTE – B3 : 1 715 MHz ~ 1 785 MHz (TX) / 1 810 MHz ~ 1 880 MHz (RX) LTE – B5 : 824 MHz ~ 849 MHz (TX) / 869 MHz ~ 894 MHz (RX) LTE – B7 : 2 500 MHz ~ 2 550 MHz (TX) / 2 620 MHz ~ 2 670 MHz (RX) LTE – B8 : 904.3 MHz ~ 915 MHz (TX) / 949.3 MHz ~ 960 MHz (RX)
WCDMA	1 922.8 MHz ~ 1 977.2 MHz (TX) / 2 112.8 MHz ~ 2 167.2 MHz (RX)
NFC	13.56 MHz
GPS	GNSS receiver support for GPS, GLONASS, Galileo, and Beidou
Bluetooth	BT(BDR/EDR/LE 1M/LE 2M) : 2 402 MHz ~2 480 MHz (TRX)

Certification

- **Model** : PM84P
- **Trade name of certified** : POINT MOBILE Co., Ltd.
- **Manufacturer** : POINT MOBILE Co., Ltd.
- For more certificate information
go to **Settings > About phone > Certificates.**

Support

ARS : +82-1800-3010

FAX : +82-2-3397-7872

Address : 26F, Gasan Publik Building A, 178, Digital-ro, Geumcheon-gu Seoul, Korea 08513

Website : <https://www.pointmobile.com/>

E-mail : pm_ta@pointmobile.com