



PM84P

Now Even Smarter and Faster
A New Generation Beyond PM84

At-a-glance

PM84P



Qualcomm
Octa-core
2.0 GHz



Android 15
(Upgradeable to 18)



4GB / 64G
8GB/ 64G (opt)



Wi-Fi 6E, LTE
Bluetooth 5.3



NFC,
R&F Camera
2D Scan



5.5" HD+
720 x 1440
Gorilla Glass
263g



STD: 4,800 mAh
EXT: 7,020 mAh
(Hot-swappable)



1.5 m (5 ft.)
Drop Resistant
IP6



Integrated
RFID Tag (opt)

Specifications



Highlight



Upgraded Performance Architecture

- Octa-core Processor
- 4 GB or 8 GB RAM / 64 GB UFS
- Android 15 (Upgradable to 18)
- 4,800 mAh (STD) / 7,020 mAh (EXT)

Versatile Data Capture

- 2D Barcode Scanning
- Integrated RFID Tag
- In-Display NFC Support
- 5 MP Front / 13 MP Rear Cameras

Rugged and Reliable Design

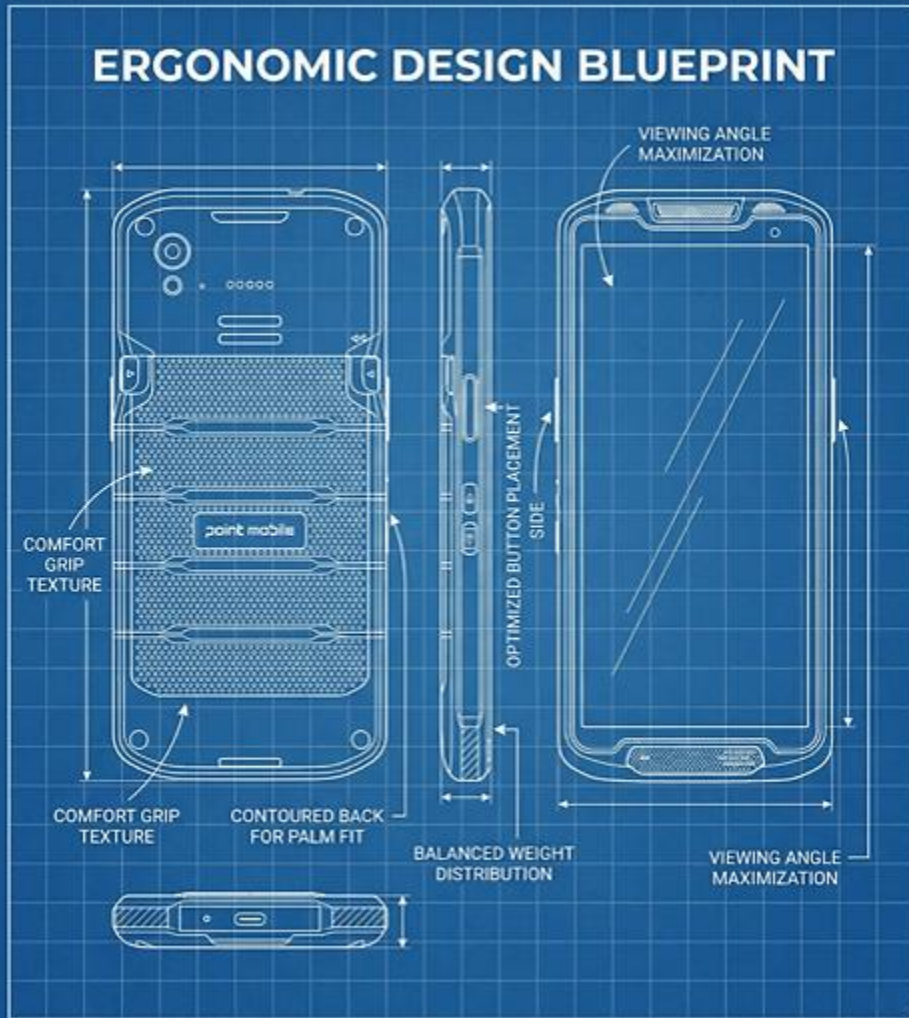
- 1.5 m Drop Tested
- MIL-STD-810H Compliant
- IP65

Enhanced Connectivity & Compatibility

- Wi-Fi 6E, LTE
- Bluetooth 5.3
- Accessories Compatibility

A Time-Tested Design

Design



Why change a design that's **already perfected** in the field?

The new **PM84P** inherits the **identical form factor** of the industry-favorite PM84.

It retains the field-proven ergonomics and iconic design. We kept the form factor you love to ensure a seamless transition and zero learning curve, allowing you to focus entirely on your task at hand.

Seamless Migration

Broad Compatible With PM84 Ecosystem

By maintaining the proven design of the PM84, PM84P supports **broad compatibility with existing PM84 accessories**, including cradles, gun handles, and straps. Helping businesses maximize prior investments, reduce replacement costs, and maintain smooth, uninterrupted operations.



Industrial-Grade Protection

Design



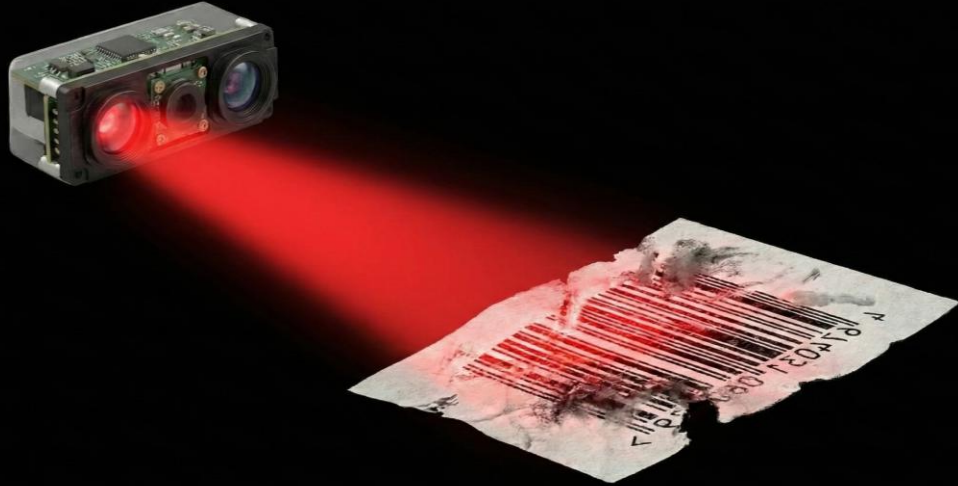
IP65
&
1.8M
Drop Resistance

Built to endure tough environments, the PM84P survives **1.5 m drops (1.8 m with Rugged Boot)** and 500 tumbles from 0.5 m. Operating from -20°C to 60°C (-4°F to 140°F) with **IP65** dust and water protection and Corning Gorilla Glass, it delivers reliable, long-lasting performance wherever your business takes it.



Fast & Reliable Scanning

Data Capture



PM84P is equipped with the **S0703 slim imager**, delivering fast and reliable barcode scanning in real-world environments. It accurately captures damaged, poorly printed, or low-contrast barcodes, helping reduce re-scans and maintain consistent performance during daily operations. This ensures efficient and dependable data capture across retail, logistics, and field service applications.



Purpose-Built Imaging

Data Capture



5 MP

Front Camera



13 MP

Rear Camera



PM84P features a **5 MP front camera** and a **13 MP rear camera**, delivering clear and dependable imaging for everyday enterprise operations.

Whether capturing barcode labels, documenting on-site activities, or verifying assets, its cameras provide the clarity you need to keep workflows smooth and accurate.

In-Display NFC

Data Capture



Seamless, secure, and fast—contactless payments are no longer a convenience, they're a necessity.

Unlike traditional back-mounted NFC, PM84P features In-Display NFC, enabling on-screen NFC interaction for more intuitive identity verification and contactless payments. By interacting directly on the display, users can complete NFC tasks naturally, without searching for a rear sensor or changing device orientation.



Powers Your Workflow



Connectivity

Wi-Fi 6E

Access the 6GHz band for less interference and higher throughput, providing stable connections in dense warehouse environments.

LTE

Stay connected everywhere with reliable LTE support for field service and logistics.

Bluetooth 5.3

Upgraded from Bluetooth 5.1 to 5.3, the PM84P offers faster pairing, more stable connections, improved power efficiency, and enhanced security, including Encryption Key Size Control for stronger data protection. It ensures reliable short-range connectivity for on-site operations and mobile tasks, keeping workflows seamless and efficient.



One Step Beyond

Performance

Performance Built for the Future

Future-proof OS : Pre-installed with Android 15, upgradeable to Android 18. This ensures a longer device lifecycle and maximum security for your investment. Minimize total cost of ownership (TCO) with a device that stays current for years

Optimized Processing : The Qualcomm octa-core 2.0GHz processor provides seamless multitasking, tailored for demanding enterprise applications

Always on, Always ahead

Performance



Flexibility of battery capacity

Match your power to your workload. Choose between the **4,800mAh standard battery** for daily tasks or the **7,020mAh extended version** for high-intensity shifts. This flexibility ensures your team stays powered up in any work environment, eliminating battery anxiety for good.

Zero Downtime

Eliminate downtime with advanced **Hot-swap technology**. Replace batteries on the fly without powering down the device or losing data. Your workflow remains seamless and uninterrupted, making it the perfect solution for 24/7 operations where every second counts.



Vertical

WAREHOUSE

RETAIL



Vertical

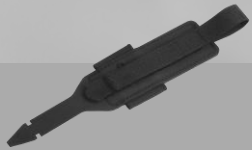
LOGISTICS

FIELD
SERVICE

PUBLIC
SECTOR

Accessories

Basic Package



Hand Strap



Battery
(4,800 mAh
or 7,020 mAh)



LCD Protective Film



Power Plugs



AC/DC Adapter

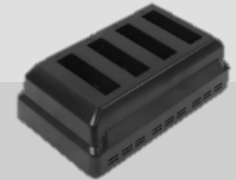
Optional



Single Slot Cradle
(opt. lite version)



Single Slot
Ethernet Cradle
(opt. lite version)



4-slot
Battery Charger



Gun Handle



Rugged Boot



USB-C Cable



Point Mobile Co., Ltd.

<https://www.pointmobile.com/en/contactus>

Tel: +82-2-3397-7870~1

ARS: 1800-3010

Fax: +82-2-3397-7872

Address: 26F, Gasan Publik,
178, Digital-ro, Geumcheon-gu,
Seoul, Korea 08513